

Technical mentoring involves supporting someone to learn new skills.

Pastoral mentoring involves developing the whole person, which may include elements of technical mentoring.

Many younger people tell us they want to feel supported as a whole person to feel more engaged.

Which do you currently offer?

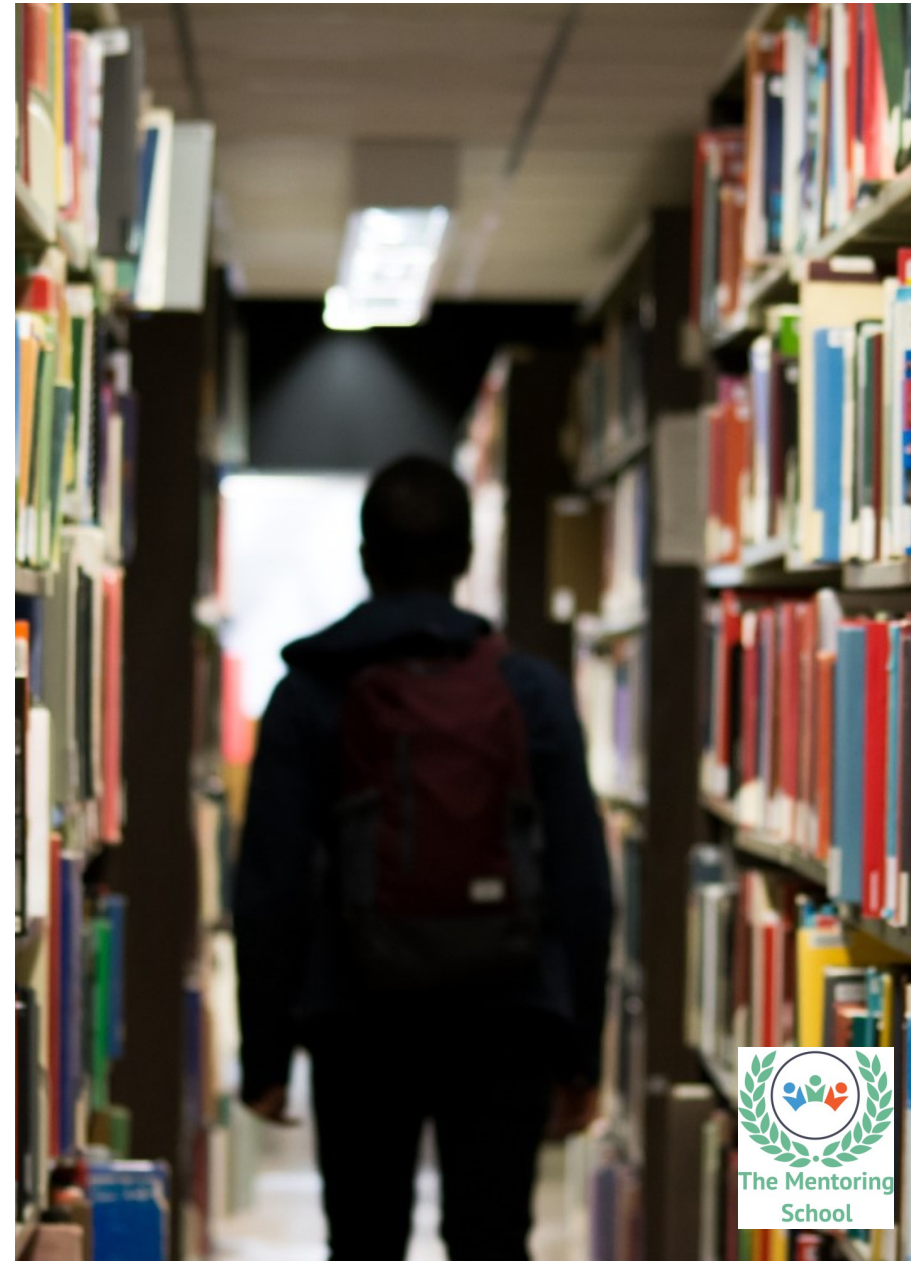


3 Merridale Road
Southampton
SO19 7AB
United Kingdom

T: +44 2381 120010
E: hello@thementoringschool.com
W: www.thementoringschool.com

Certified Practitioner Mentor for Learning Course

Helping train staff to support learning difficulties in secondary, further, higher and vocational education



Increasing academic outcomes and opportunities

Course delivery

We can deliver or train your team to deliver:

- 3-day classroom course
- eLearning

These are then followed by an online assessment and an optional six-month portfolio.

Total time is approx. 125-150 hours.

Assessment

Learners pass an online assessment to become certified. Includes accreditation on the public Register of Mentors for six months.

Following this, there is an ongoing fee for continued registration.

Learners also have the option to do a 5-unit reflective assignment to convert their course into a Level 3 Academic Mentor qualification (currently undergoing registration).



As young people mature, they are required to take more responsibility for their learning. This causes additional problems for those with learning needs. This course is aimed at helping educational staff provide mentoring to young people to help them overcome some of these problems.

This time in a young person's life brings a unique set of education languages. Whether you work in secondary, further, higher or vocational education, you are preparing your students for over-



Independence, skills, progress



coming their difficulties in later life. This requires an understanding of how to balance their need for support with the need to develop independence.

Multi-award-winning training providers, The Mentoring School, have developed a course to help you to actively support and engage the young people you are working with.

The specialist course covers up to date good practice skills in working with individuals or groups.

Our specialist course covers:

- Good practice
- Boundaries
- Working with young people
- Common academic difficulties
- Other barriers to learning
- Structuring mentoring conversations
- Working with groups
- Referral systems
- Record keeping

Course contents

- About you
- What is a Mentor
- Barriers to learning and overcoming them
- Learning styles
- Managing emotions
- Good practice for mentors
- Mindset
- Supporting specific conditions
- Planning an individual intervention
- Planning a group intervention
- Involving children and young people
- Involving staff
- Understanding the role of brain development
- Setting up a referral system
- Monitoring outcomes of intervention
- Bringing it all together